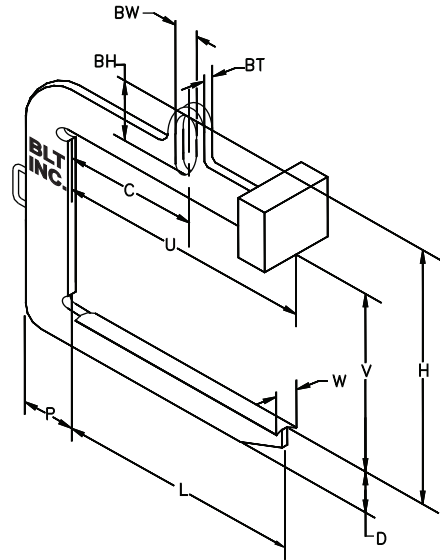


Slit Coil C-Hooks

- The Slit Coil C-Hook has a longer lift arm equaling in width to the maximum coil width to allow handling of multiple coils.
- Integral lifting bail saves headroom and minimizes inspection service required with welded bails.
- High strength alloy steel is wear resistant and reduces the physical size of the lifter.
- All lifters are proof tested to meet or exceed ANSI/ASME B30.20 standards and test certificate issued. Painted safety yellow and clearly marked on both sides with rated capacity to conform to OSHA standards.



Model Number	Pounds	Inches (See Note #5)											Pounds							
	Capacity (See Note #4)	Coil Width		Vertical Clear V	Dist. To Center of Gravity C	Upper Arm Length U	Lift Arm Length L	Lift Arm Depth D	Vertical Post Depth P	Lift Arm Width W	Ball Size (See Note #2 & #3)			Total Height H	Approx. Lifter Weight					
		Max.	Min.								BT	BW	BH							
BLT10362416-SCC	10000	36	24	16	18	36	36	5-1/2	8	4	1-1/2 x 4 x 10			34-1/2	405					
BLT10362424-SCC				24										42-1/2	472					
BLT10483016-SCC		48	30	16	24	48	48	6-1/2	8-1/2					35-1/2	531					
BLT10483024-SCC				24										43-1/2	603					
BLT10603616-SCC		60	36	16	30	60	60	7-1/2	9-1/2					36-1/4	670					
BLT10603624-SCC				24										44-1/4	746					
BLT20362424-SCC	20000	36	24	24	18	36	36	7-1/2	10	4	1-3/4 x 4 x 10			45	743					
BLT20362430-SCC				30										51	821					
BLT20483024-SCC		48	30	24	24	48	48	8-1/2	11					46	938					
BLT20483030-SCC				30										52	1020					
BLT20603616-SCC		60	36	16	30	60	60	9-1/4	12					38-1/2	1043					
BLT20603624-SCC				24										46-1/2	1158					
BLT20724216-SCC		72	42	16	36	72	72	10	13					39-1/2	1266					
BLT20724224-SCC				24										47-1/2	1389					
BLT30483024-SCC		30000	48	30	24	24	48	48	9-1/2					12-1/2	4	2 x 6 x 14			51-1/2	1253
BLT30483030-SCC					30														57-1/2	1361
BLT30603024-SCC	60		36	24	30	60	60	10-1/2	13-3/4	52-1/2	1542									
BLT30603630-SCC				30						58-1/2	1680									
BLT30724224-SCC	72		42	24	36	72	72	11-1/2	14-3/4	53-1/2	1845									
BLT30724230-SCC				30						59-1/2	1974									
BLT40483030-SCC	40000	48	30	30	24	48	48	10-1/4	13-3/4	4	2-1/4 x 6 x 14			58-1/2	1722					
BLT40483036-SCC				36										64-51/2	1857					
BLT40603624-SCC		60	36	24	30	60	60	11-1/2	14-1/2					54	1938					
BLT40603630-SCC				30										60	2110					
BLT40724224-SCC		72	42	24	36	72	72	12-1/2	16					55	2348					
BLT40724230-SCC				30										61	2518					
BLT50483030-SCC	50000	48	30	30	24	48	48	11	14-1/2	4	2-1/2 x 6 x 18			64	2103					
BLT50483036-SCC				36										70	2270					
BLT50603628-SCC		60	36	28	30	60	60	12	15-3/4					63	2472					
BLT50603634-SCC				34										69	2640					
BLT50724224-SCC		72	42	24	36	72	72	13-1/4	16-1/2					60-1/4	2816					
BLT50724232-SCC				32										68-1/4	3058					
BLT60603628-SCC	60000	60	36	28	30	60	60	13-1/4	17-1/4	4	2-1/2 x 6 x 18			64-1/4	2766					
BLT60603634-SCC				34										70-1/4	2957					
BLT60724228-SCC		72	42	28	36	72	72	14-1/4	18-1/4					65-1/4	3265					
BLT60724234-SCC				34										71-1/4	3463					
BLT80724238-SCC	80000	72	42	38	36	72	72	15	19-1/2	5	3 x 6 x 18			77	4683					
BLT80724244-SCC				44										83	4945					
BLT100844638-SCC	100000	84	46	38	42	84	84	15-3/4	20	5	4 x 6 x 18			79-3/4	6892					
BLT100844644-SCC				44										85-3/4	7331					

- NOTES:
1. Lifting arm length allows multiple coil widths to be handled, but not to exceed the maximum coil width.
 2. All coils must be centered under the lifting bail.
 3. Please verify that the crane hook will fit the lifting bail size.
 4. Other capacities, lengths, and parking stands available upon request.
 5. Above dimensions and weights are approximate and may vary based on design.